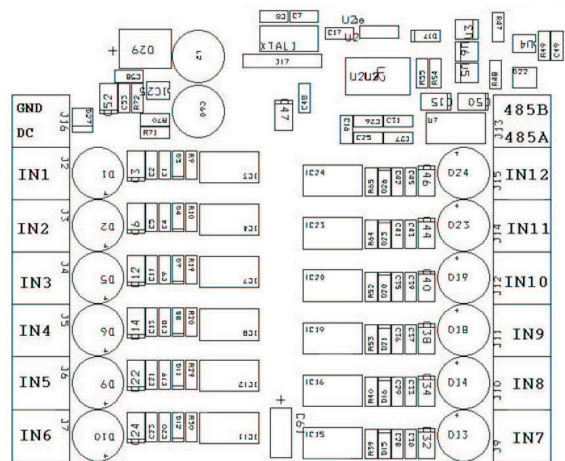
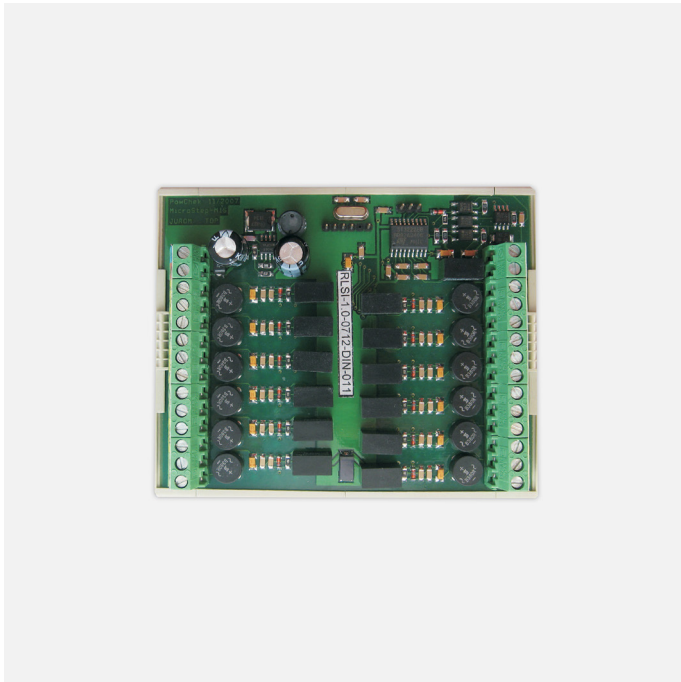


# RLSI

## Runway Lights Setting Interface

RLSI is an electronic device designed to interface airport runway light system and to provide the RVR system with the current intensities of runway central and/or edge lights to be used for the computation of the RVR value based on the runway lights using Allard's law. The RLSI provides 12 inputs, which can be interpreted by software (for example 2 runways / 6 intensity levels).



## Technical specifications

<b>12 digital inputs IN1 to IN12</b>	<ul style="list-style-type: none"> <li>• 0 to 2 V AC/DC logical 0</li> <li>• 5 to 500 V AC/DC logical 1</li> </ul>
<b>Communication</b>	RS-485 (9600 baud, 8 data bits, 1 stop bit, parity none)
<b>Power supply</b>	12 V DC, 3 W
<b>Dimensions</b>	95 x 115 x 45 mm
<b>Weight</b>	216 g
<b>Operating temperature range</b>	-20 to +55 °C
<b>Storage temperature range</b>	-40 to +85 °C
<b>Operating humidity range</b>	0 to 100 % non-condensing



**ISO Quality Certified Company**

All specifications are subject to change without prior notice.  
 © MicroStep-MIS. All rights reserved.  
[www.microstep-mis.com](http://www.microstep-mis.com)