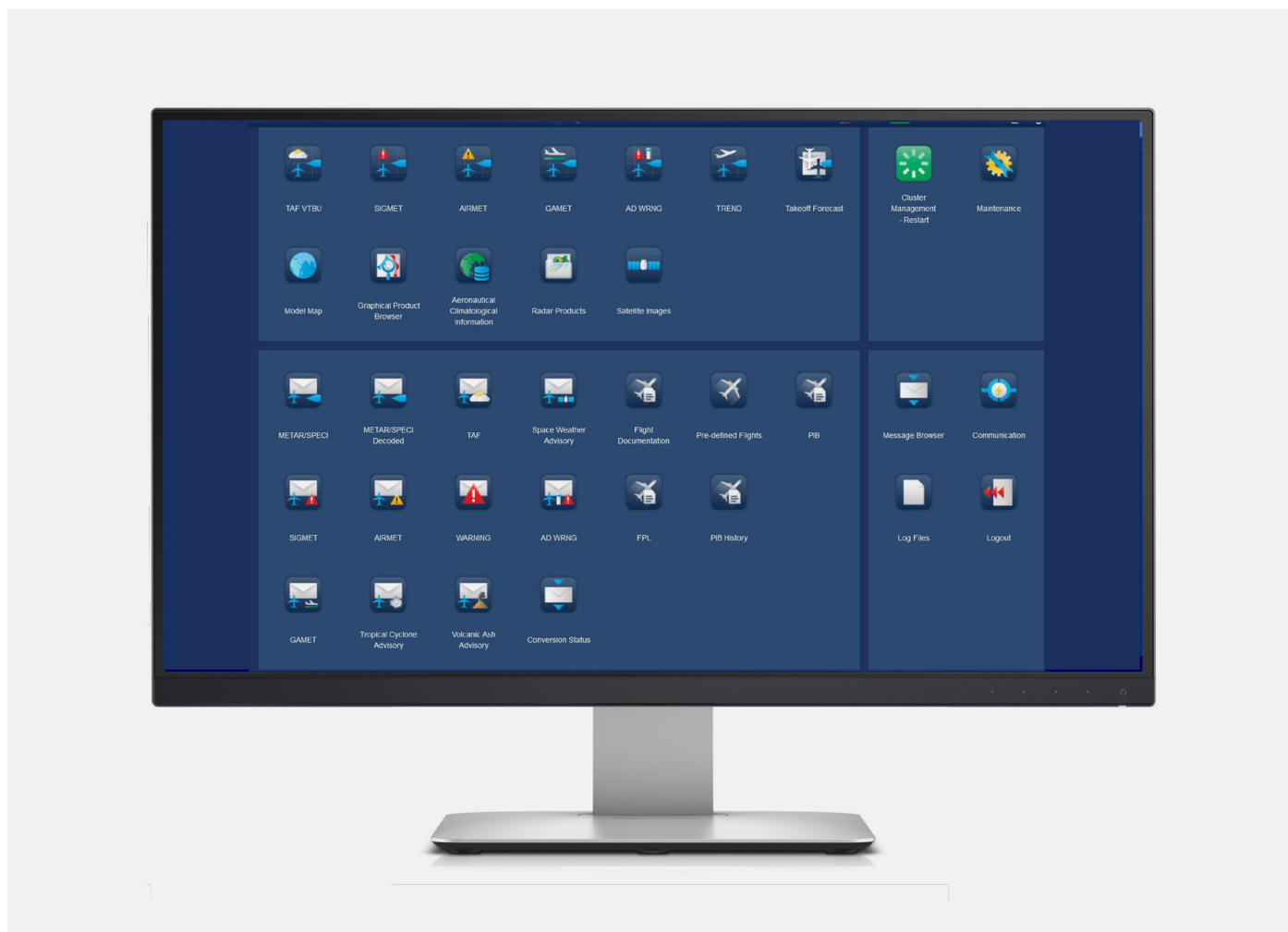


IMS4 Pilot Briefing

Pre-flight documentation for pilots

IMS4 Pilot Briefing supplies meteorological information to aviation users in order to ensure the safety and regularity of air navigation.



Main menu screen - provides access to all IMS functions dedicated for authorized users; easy to use interface.

IMS4 Pilot Briefing workstation, either standalone or fully integrated within IMS4 Automated Weather Observation System, facilitates collecting and printing of flight documentation for pilots based on the local meteorological data and messages received from the GTS or AFS networks.

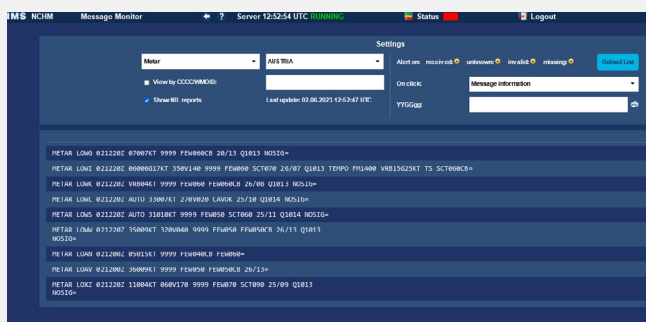
The IMS4 Pilot Briefing integrates automatic handling of data validation.

Users can easily collect and print all necessary flight documentation containing the local conditions, conditions at the target and along the flight route. A single definition of the flight-route into the system is sufficient for the IMS4 Pilot Briefing to master this task in a few seconds time. Flight-route definition can be performed by the selection of a station list on the basis

of ICAO indicators or station names. The stations included in the flight-route provide the basis for the generation of the PIB (pre-flight information bulletin).

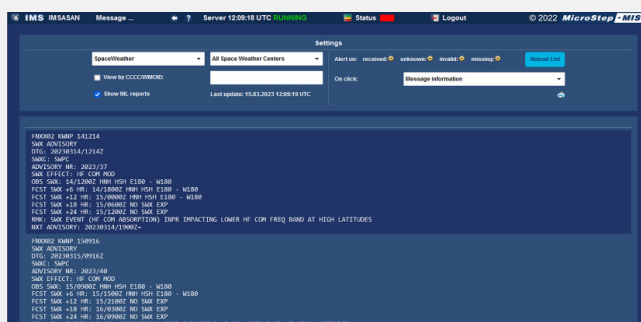
Besides standard PIB information like OPMET data, SIGWX and Upper wind-temperature charts, the PIB can contain a cross-section of the temperature and wind conditions along the flight route that also perfectly describe the take-off and landing conditions.

The system warns users about all received meteorological or operational warnings like volcanic ash or tropical cyclone advisories, SIGMETs, AIRMETs, as well as other warnings and administrative messages.

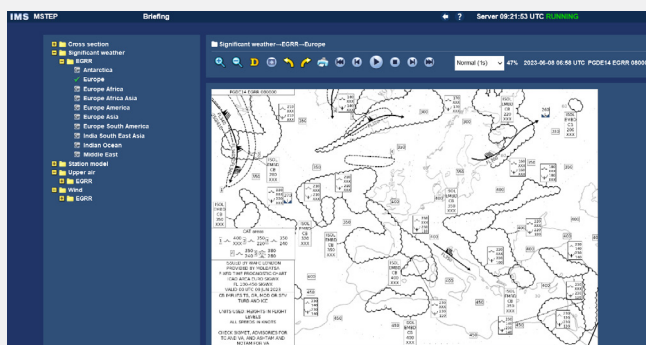


MESSAGE MONITOR: - real-time OPMET data:

- METAR/SPECI
- TAF
- SIGMET (including volcanic ash and tropical cyclone)

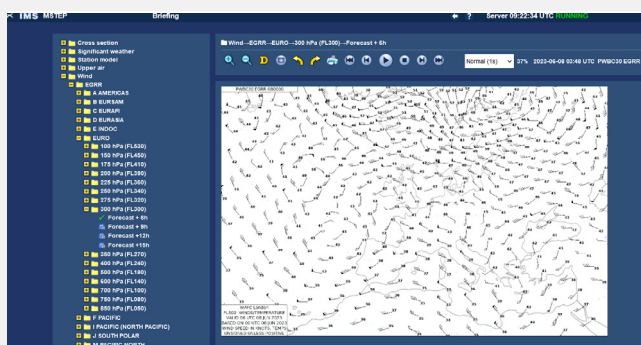


- GAMET/AIRMET
- Tropical Cyclone Advisories
- Volcanic Ash Advisories
- Space Weather Advisories



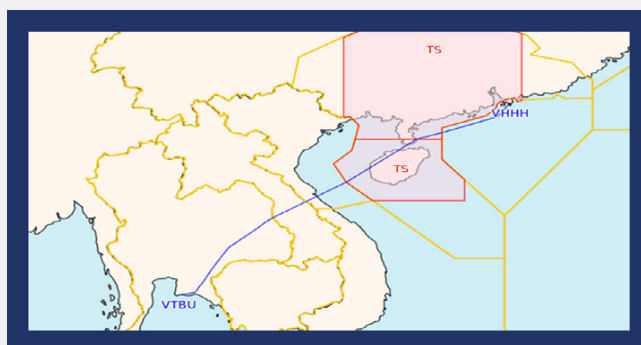
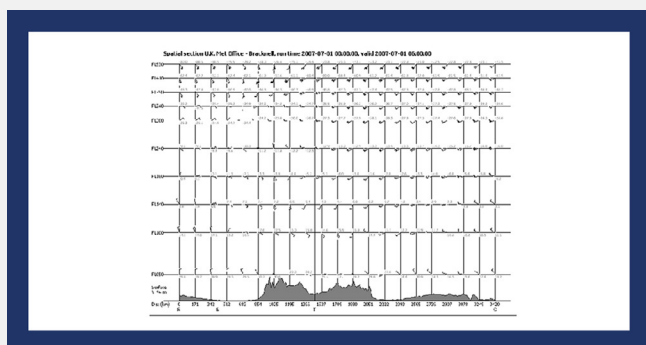
GRAPHICAL PRODUCTS

- SIGWX charts from WAFS
- Upper Wind/Temperature charts from WAFS
- Other



PRE-FLIGHT INFORMATION

- Flight Data
- List of flights



Other meteorological information in alphanumeric or graphical form

- Cross-sections
- SIGMET visualization

PRE-FLIGHT DOCUMENTATION / PRINT, EMAIL, FTP

ROYAL THAI NAVY AIR NAVIGATION AUTHORITY
METEOROLOGICAL INFORMATION DEPARTMENT
FLIGHT FOLDER

Flight: PG282		
From: VTBU	Rayong	E.T.D.: 2023-06-07 18:00 UTC
To: VTSP	Phuket Airport	E.T.A.: 2023-06-07 19:20 UTC
Alternates: VTBS	SUWARNABHUMI	100 km
Flight duration: 01:20		
Aircraft: A380		
Flight levels: FL1200		
Compiled: 2023-06-07 12:08 UTC		
Checked by: Larisa Nikitina		
Total pages: 8		

The standard time used throughout this folder is UTC.



The software producing this flight folder is made by MicroStep-MIS
© MicroStep-MIS (Czech Republic), 841 04 Bratislava 4 Tel: +421 2 602 00 100
<https://www.microstep-mis.com/> E-mail: info@microstep-mis.com

PG282 Charter MicroStep-MIS

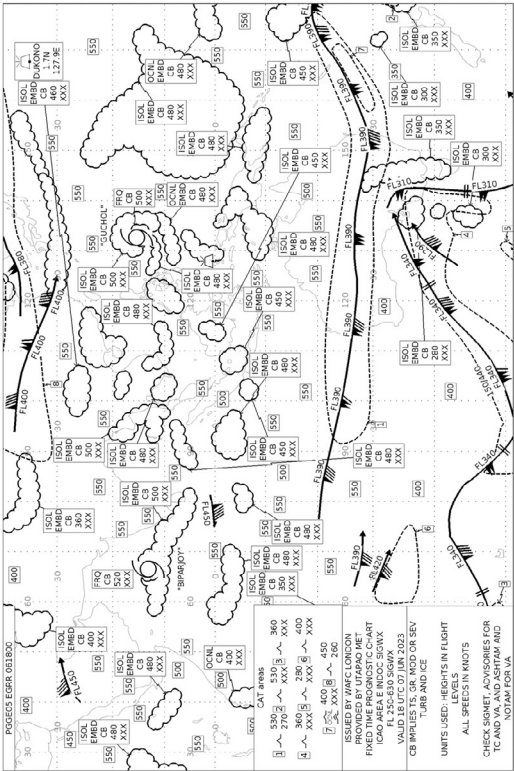
Selected ICAO location identifiers

VTSP Phuket Airport VTBU Rayong
VTBS Bangkok Suvarnabhumi / Chon Buri VTBB BANGKOK

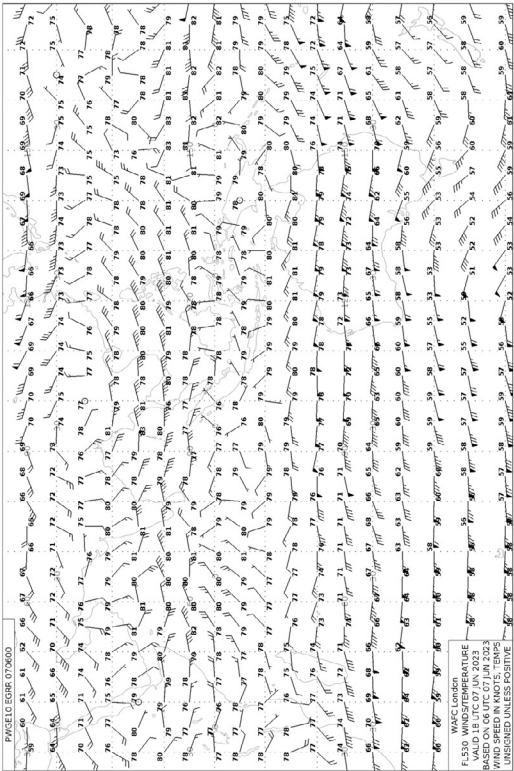
Messages

FNXX
FNXX SpaceWeather NIL=
VTSP - DESTINATION AERODROME
11:30 METAR VTSP 071130Z 21004KT 210V270 9999 FEW020 28/25 Q1007 NOSIG=
11:00 TAP VTSP 071100Z 0712/0812 24005KT 9999 FEW020 TEMPO 0722/0804 -TSRA FEW018CB SCT020 BKN100=
VTBU - DEPARTURE AERODROME
11:30 METAR VTBU 071130Z 19014KT 9999 FEW020 29/25 Q1006 NOSIG=
11:00 TAP VTBU 071100Z 0712/0812 18012KT 9999 FEW020 BECMG 0715/0717 24006KT TEMPO 0721/0801 20015KT 3500 TSRA FEW018CB SCT035 BKN100 BECMG 0805/0807 18012KT=
VTBS
11:30 METAR VTBS 071130Z 19015KT 9999 FEW020 30/24 Q1004 NOSIG=
11:00 TAP VTBS 071100Z 0712/0812 20008KT 9999 FEW020 TEMPO 0714/0716 VRB15KT 3000 TSRA FEW018CB SCT030 BKN100 TEMPO 0808/0812 VRB15KT 3000 TSRA FEW018CB SCT030 BKN100=
VTBB
09:50 VTBB SIGMET 03 VALID 070955/071355 VTBS- VTBB BANGKOK FIR RMBD TS OBS WI N1628 E10406 - N1507 E10537 - N1427 E10524 - N1408 E10133 - N1555 E10043 - N1628 E10406 TOP FL530 MOV WSW 10KT NC=

PG282 Charter MicroStep-MIS



PG282 Charter MicroStep-MIS



IMS4 Briefing & Forecasting

The software aids meteorological forecaster by visualizing meteorological information and providing templates for standard and local forecasts.

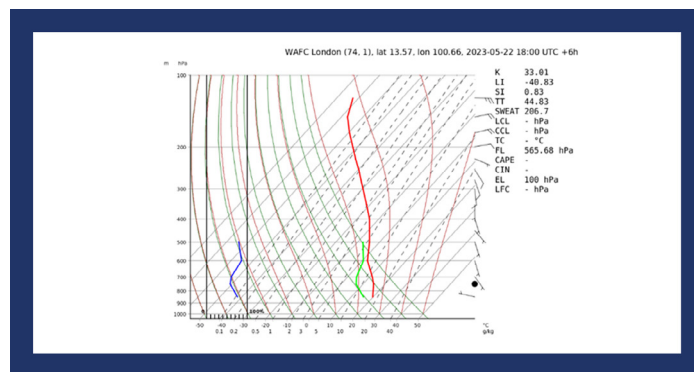
Visualization of meteorological information for forecaster:

- Different formats:
 - TAC
 - BUFR
 - PNG
 - GRIB
 - IWXXM
- Different sources:
 - GTS/AFS
 - SADIS
- Different data:
 - OPMET data
 - VAAC, TCAC and SWAC information
 - Soundings
 - Radar
 - Satellite
 - Lightning
- other...

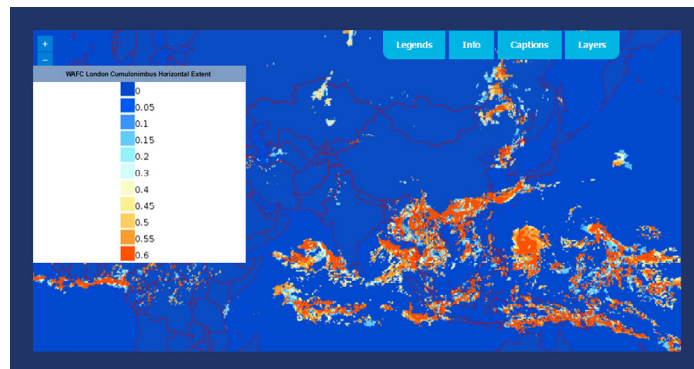
Templates for creation of forecasts and warnings:

- AIREP
- AIRMET
- GAMET
- Aerodrome Warning
- SIGMET
- TAF
- TREND
- Wind Shear Warning
- other... (e.g. warnings according to regional agreement)

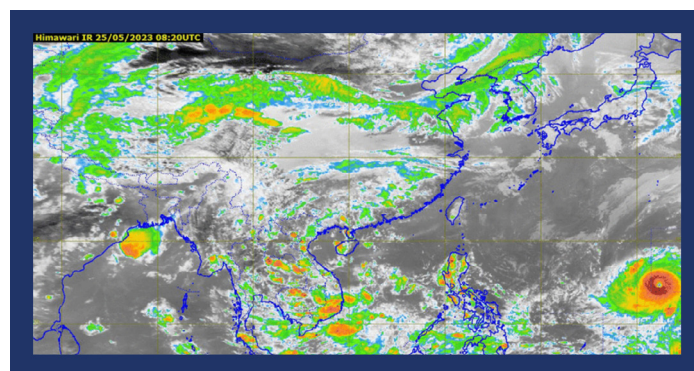
Messages are checked for errors before compilation.
GTS/AFS headers and other automatically available information is filled in by the system.



Soundings



CB extension (WAFC London)



Satellite data (HIMAWARE-9)

TAF template