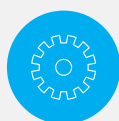
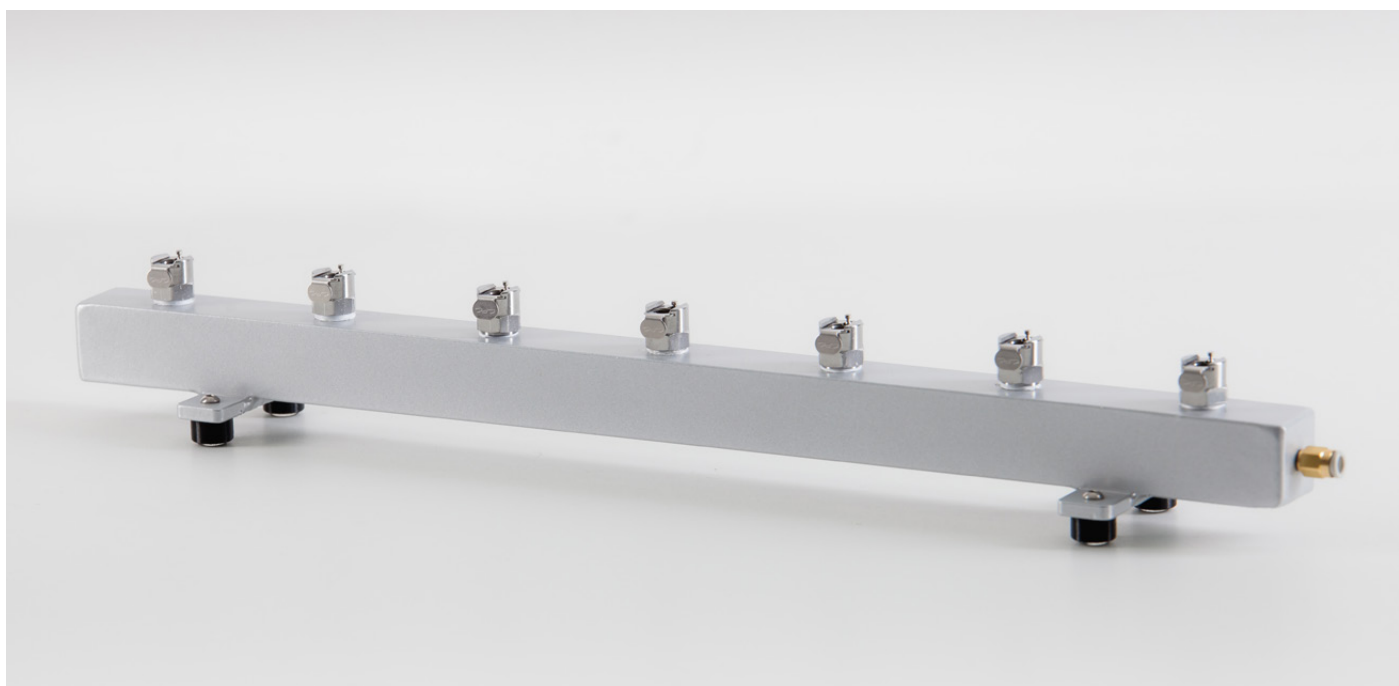
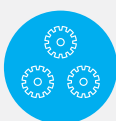


# Manifold

The manifold has been designed to connect multiple barometers into one pressure calibration system. It ensures proper and gas-tight connection within the defined ranges of pressure and temperature.



Secure and air-tight



Easy connection of any number of barometers



Automatic shut-off



Durable design

It is possible to use automatic shut-off pressure connector types, making it easy to connect any number of sensors to the system, whilst the unused ports remain shut.

Dimensions, number of pressure ports, spacing between the ports, type of pressure port connector and other properties can be designed according to individual requirements.

## Mechanical specifications

<b>Length</b>	49 cm
<b>Port spacing</b>	7 cm
<b>Number of ports</b>	7
<b>Material</b>	aluminium alloy
<b>Pressure connector type</b>	5 mm barbed fitting, optional: auto shut-off
<b>Absolute pressure range</b>	0 to 1500 hPa
<b>Temperature range</b>	-40 °C to +80 °C

