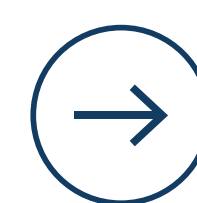
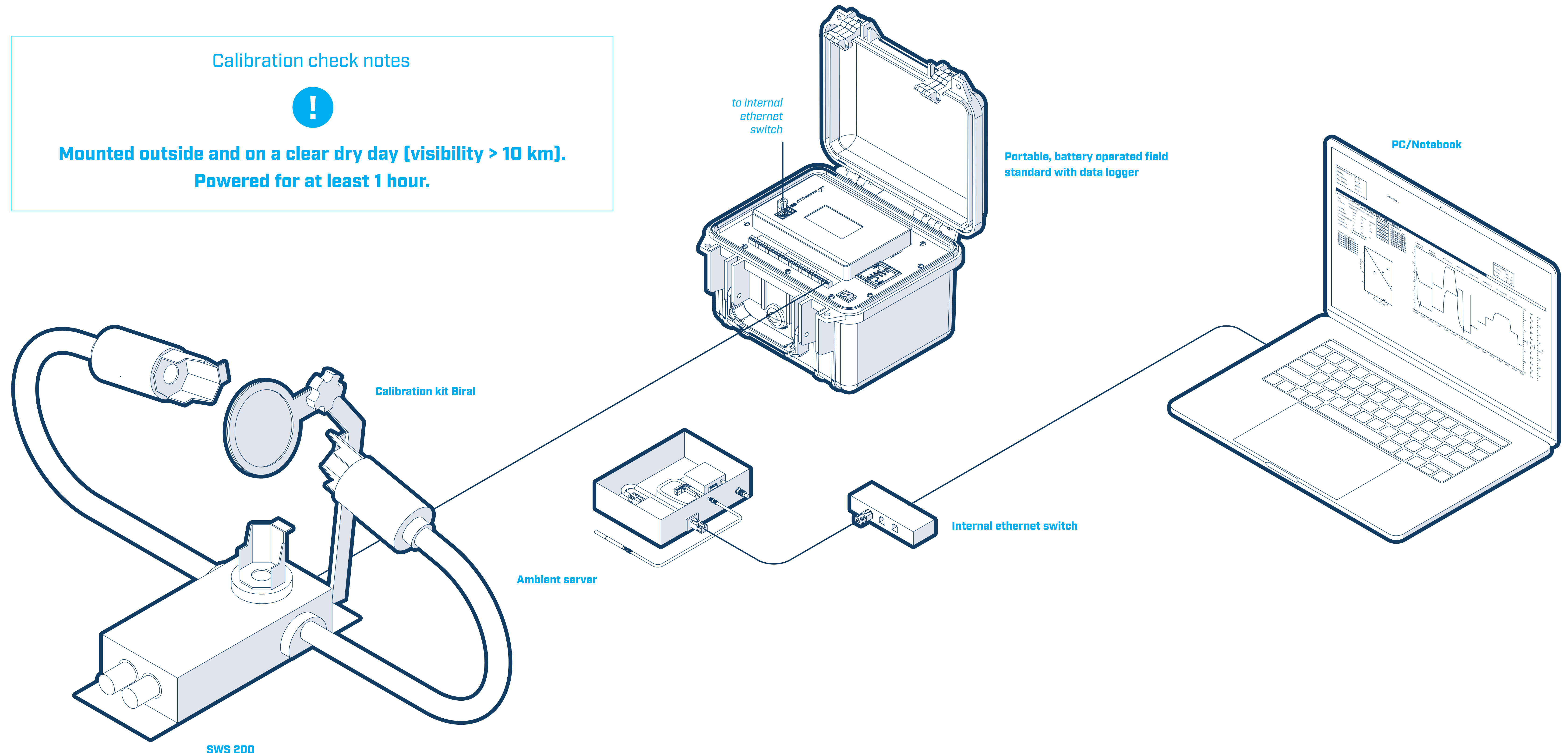


Calibration check notes

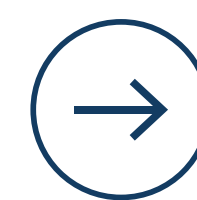


**Mounted outside and on a clear dry day (visibility > 10 km).
Powered for at least 1 hour.**



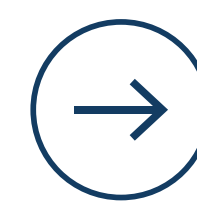
Ethernet Switch

- Connect switch to electricity and then plug ethernet cable to the PC/NTB



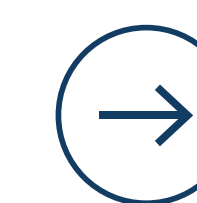
Ambient server

- Connect ambient server to the switch and electricity



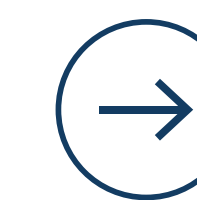
Datalogger

- Connect Datalogger to the switch with ethernet cable.
- Power on datalogger



Calibrated sensor

- Remove from the station
- Connect the calibrated sensors to the datalogger



Reference [SWS Calibration Kit.]

- Mount the calibration reference plaque
- Insert GREY FOAM PLUGS in the front of each window blocking out all light.

MicroStep - MIS

Calibration System for Visibility

Mobile/field version